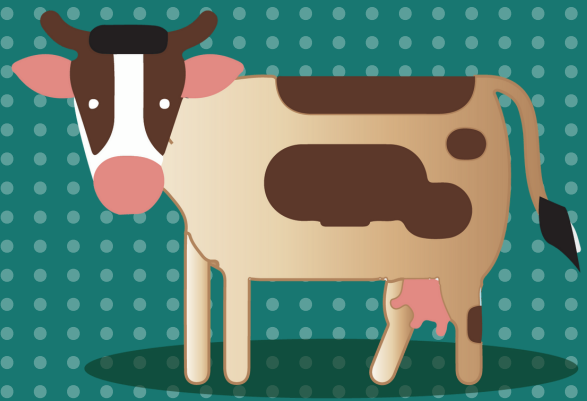


# Proper handling of livestock transport

## Documentation

Verify that you have the necessary documentation required by the competent authorities.



## Vehicle

Transport floors should be non-slip with no unevenness, designed to prevent urine, manure or other material from being spilled on the tracks.

## Eligible animals

Check all animals before loading them on the truck; they must be healthy and able to move around during the trip. Stop at least three times to make sure they are well.

## Ineligible animals

Transport only healthy animals; sick and injured animals are not suitable for travel.  
Do not transport cattle in advanced pregnancy or in the first week post parturition.

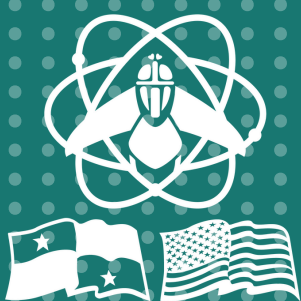
## Food and water

Ensure that the animals are well rested, hydrated and fed before starting the trip. The vehicle should be enclosed with good ventilation to prevent animals from sticking their heads or limbs out.



## Space per animal

Each animal should have enough space so that they do not collide with each other or cause stress.  
Do not transport different species or sizes of animals in the same truck.  
Animals should not travel for more than 10 continuous hours.



**COPEG**

**EMERGENCY HOTLINE  
800-2673**